

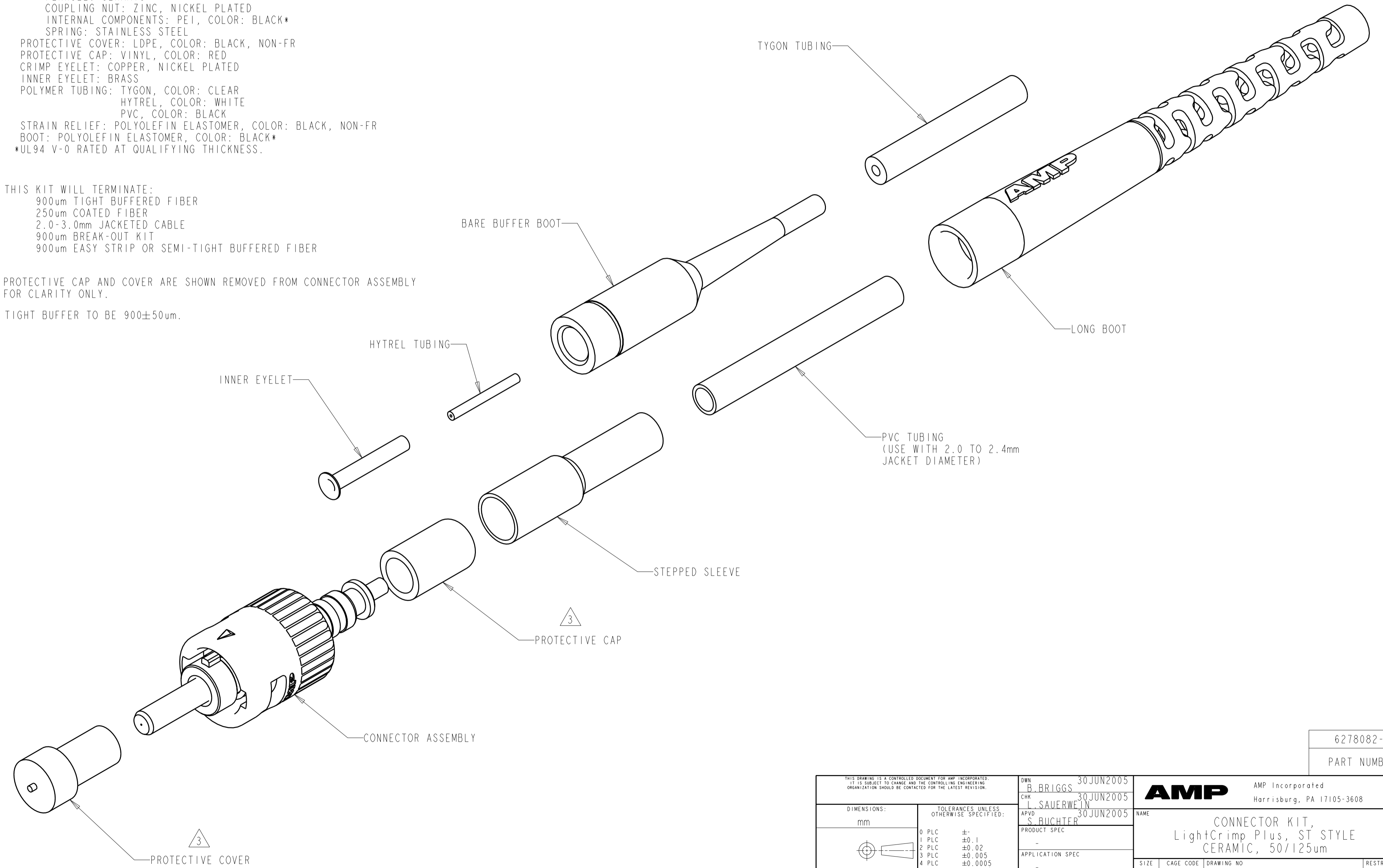
THIS DRAWING IS UNPUBLISHED. RELEASED FOR PUBLICATION .19  
 BY AMP INCORPORATED. ALL RIGHTS RESERVED.

| LOC | DIST | REVISIONS   |                   |           |       |
|-----|------|-------------|-------------------|-----------|-------|
| F   | LTR  | DESCRIPTION | DATE              | DWN       | APVD  |
| CE  | 00   | A           | RELEASE TO ACTIVE | 08JUN2006 | BB LS |

- 1 MATERIAL:  
 CONNECTOR ASSY  
 REAR BODY: ALUMINUM ALLOY  
 PLUNGER: ALUMINUM ALLOY  
 FERRULE: CERAMIC  
 COUPLING NUT: ZINC, NICKEL PLATED  
 INTERNAL COMPONENTS: PEI, COLOR: BLACK\*  
 SPRING: STAINLESS STEEL  
 PROTECTIVE COVER: LDPE, COLOR: BLACK, NON-FR  
 PROTECTIVE CAP: VINYL, COLOR: RED  
 CRIMP EYELET: COPPER, NICKEL PLATED  
 INNER EYELET: BRASS  
 POLYMER TUBING: TYGON, COLOR: CLEAR  
 HYTREL, COLOR: WHITE  
 PVC, COLOR: BLACK  
 STRAIN RELIEF: POLYOLEFIN ELASTOMER, COLOR: BLACK, NON-FR  
 BOOT: POLYOLEFIN ELASTOMER, COLOR: BLACK\*  
 \*UL94 V-0 RATED AT QUALIFYING THICKNESS.

2. THIS KIT WILL TERMINATE:  
 900um TIGHT BUFFERED FIBER  
 250um COATED FIBER  
 2.0-3.0mm JACKETED CABLE  
 900um BREAK-OUT KIT  
 900um EASY STRIP OR SEMI-TIGHT BUFFERED FIBER

- 3 PROTECTIVE CAP AND COVER ARE SHOWN REMOVED FROM CONNECTOR ASSEMBLY FOR CLARITY ONLY.  
 4. TIGHT BUFFER TO BE 900±50um.



6278082-1  
 PART NUMBER

|   |  |                                    |  |                    |
|---|--|------------------------------------|--|--------------------|
| THIS DRAWING IS A CONTROLLED DOCUMENT FOR AMP INCORPORATED. IT IS SUBJECT TO CHANGE AND THE CONTROLLING ENGINEERING ORGANIZATION SHOULD BE CONTACTED FOR THE LATEST REVISION. |  | DWN<br>B. BRIGGS<br>30 JUN 2005    | AMP Incorporated<br>Harrisburg, PA 17105-3608                            |                    |
| DIMENSIONS:<br>mm   |  | CHK<br>L. SAUERWEIN<br>30 JUN 2005 | NAME<br>CONNECTOR KIT,<br>LightCrimp Plus, ST STYLE<br>CERAMIC, 50/125um |                    |
| TOLERANCES UNLESS OTHERWISE SPECIFIED:<br>0 PLC ±-<br>1 PLC ±0.1<br>2 PLC ±0.02<br>3 PLC ±0.005<br>4 PLC ±0.0005<br>ANGLES ±<br>FINISH -                                      |  | APVD<br>S. BUCHTER<br>30 JUN 2005  | PRODUCT SPEC<br>-  | RESTRICTED TO<br>- |
| MATERIAL<br>1   |  | APPLICATION SPEC<br>-              | WEIGHT<br>-  | SIZE<br>A2         |
|   |  | CUSTOMER DRAWING                   | SCALE<br>4:1   | SHEET<br>1 OF 1    |
|   |  |                                    |  | REV<br>A           |